



CATERING MENU

64 Stonehaven Dr, Kanata, K2M 2Y2
Phone: (613)271-3073 Email: arleyskanata@gmail.com

Website: www.arleysnawabs.ca



[Follow us on Facebook and Instagram for some mouth watering inspiration @arleysnawabs.ottawa](#)

1 VEGETABLE CURRIES

NUMBER OF PEOPLE SERVED	10	15	20	25	30	35	40	45
EGG PLANT (GUNTHI VANKAYA)	\$50	\$65	\$80	\$95	\$110	\$125	\$140	\$155
PALAK PANEER	\$50	\$65	\$80	\$95	\$110	\$125	\$140	\$155
SHAHI PANEER KORMA	\$50	\$65	\$80	\$95	\$110	\$125	\$140	\$155
ALOO GOBI	\$50	\$65	\$80	\$95	\$110	\$125	\$140	\$155
PALAK PANEER	\$50	\$65	\$80	\$95	\$110	\$125	\$140	\$155
KADAI PANEER	\$50	\$65	\$80	\$95	\$110	\$125	\$140	\$155
MATTAR PANEER	\$50	\$65	\$80	\$95	\$110	\$125	\$140	\$155
MALAI KOFTA	\$50	\$65	\$80	\$95	\$110	\$125	\$140	\$155
PANEER MAKHANI	\$50	\$65	\$80	\$95	\$110	\$125	\$140	\$155
VEGETABLE KORMA	\$50	\$65	\$80	\$95	\$110	\$125	\$140	\$155
BHINDI MASALA	\$50	\$65	\$80	\$95	\$110	\$125	\$140	\$155
CHANA MASALA	\$45	\$55	\$65	\$75	\$85	\$95	\$105	\$115
DAAL TADKA	\$45	\$55	\$65	\$75	\$85	\$95	\$105	\$115
PANEER TIKKA MASALA	\$55	\$70	\$85	\$100	\$115	\$130	\$145	\$160



Aloo Gobi



Kadai Paneer

2 CHICKEN OR GOAT CURRIES

NUMBER OF PEOPLE SERVED	15	20	25	30	35	40	45	50
ALL GOAT CURRY GONGURA, ANDHRA MUTTON, SHAHI KORMA, NAWABS CASHEW, HYDERABADI	\$60	\$75	\$90	\$105	\$120	\$135	\$150	\$165
ALL CHICKEN BUTTER CHICKEN, SHAHI, TIKKA MASALA, KADAI, CHICKEN MUGHALAI.	\$57	\$72	\$87	\$102	\$117	\$132	\$147	\$162



Chicken lollipops

Prawn Tandoori



3 ALL SEAFOOD

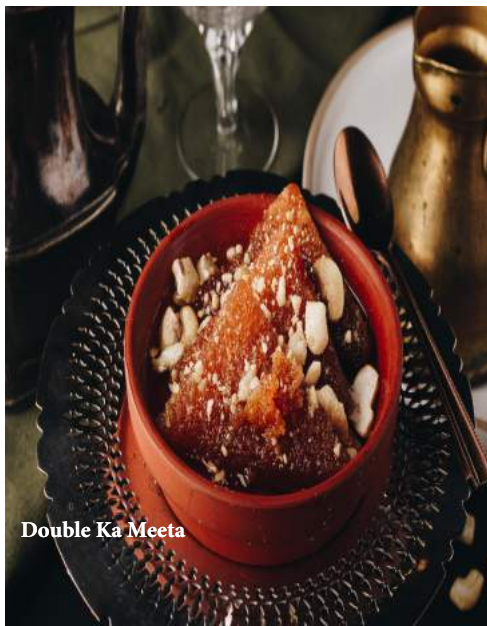
NUMBER OF PEOPLE SERVED	10	15	20	25	30	35	40	50
ALL PRAWN PRAWN MASALA	\$72	\$88	\$103	\$118	\$133	\$148	\$163	\$178
ALL SHRIMP MASALA	\$63	\$78	\$93	\$108	\$123	\$138	\$153	\$168
ALL FISH BASA FISH CURRY	\$60	\$75	\$90	\$105	\$120	\$135	\$150	\$165

4 ALL VEG APPETIZER

NUMBER OF PEOPLE SERVED	10	15	20	30	35	40	45	50
SAMOSA	\$26	\$33	\$40	\$47	\$54	\$61	\$68	\$75
VEG PAKORA & ONION BHAJI	\$30	\$39	\$48	\$57	\$66	\$75	\$84	\$93
VEG MANCHURIA	\$33	\$43	\$53	\$63	\$73	\$83	\$93	\$103
GOBI MANCHURIA	\$38	\$48	\$58	\$68	\$78	\$88	\$98	\$108
PANEER TIKKA	\$55	\$70	\$85	\$100	\$115	\$130	\$145	\$160

5 ALL NON-VEG APPETIZERS

NUMBER OF PEOPLE SERVED	10	15	20	25	30	40	45	50
ANDHRA KARAM KODU	\$39	\$49	\$59	\$69	\$79	\$89	\$99	\$109
CHICKEN 65	\$39	\$49	\$59	\$69	\$79	\$89	\$99	\$109
MASALA CHICKEN LOLLIPOPS	\$60	\$75	\$90	\$105	\$120	\$135	\$150	\$165
DRAGON CHICKEN	\$65	\$85	\$95	\$110	\$125	\$140	\$155	\$180
GOAT PEPPER ROAST	\$70	\$90	\$110	\$130	\$150	\$170	\$190	\$210
GOAT GHEE ROAST	\$72	\$88	\$103	\$118	\$133	\$148	\$163	\$178



Double Ka Meeta



Hakka Noodles



Garlic Naan

6 ALL RAITA

NUMBER OF PEOPLE SERVED	15	20	25	30	35	40	45	50
CUCUMBER RAITA	\$17	\$22	\$27	\$32	\$37	\$42	\$47	\$52
FRESH MINT RAITA	\$22	\$27	\$32	\$37	\$42	\$47	\$52	\$57
MANGO RAITA	\$27	\$32	\$37	\$42	\$47	\$52	\$57	\$62
PINEAPPLE RAITA	\$27	\$32	\$37	\$42	\$47	\$52	\$57	\$62

7 ALL RICE & BIRYANI

NUMBER OF PEOPLE SERVED	15	20	25	30	35	40	45	50
STEAMED BASMATI RICE	\$20	\$25	\$30	\$35	\$40	\$45	\$50	\$55
PLAIN PULAO RICE	\$25	\$30	\$35	\$45	\$50	\$60	\$65	\$70
PEAS PULAO RICE	\$30	\$35	\$45	\$55	\$65	\$75	\$85	\$95
JEERA RICE	\$30	\$35	\$45	\$55	\$65	\$75	\$85	\$95
VEG BIRYANI	\$48	\$63	\$78	\$93	\$108	\$123	\$138	\$153
ALL KINDS OF CHICKEN BRIYANI	\$53	\$68	\$83	\$98	\$113	\$128	\$143	\$158
PRAWN BIRYANI	\$58	\$73	\$88	\$103	\$118	\$133	\$148	\$163
GOAT BIRYANI	\$63	\$78	\$93	\$108	\$123	\$138	\$153	\$168
SHRIMP BIRYANI	\$63	\$78	\$93	\$108	\$123	\$138	\$153	\$168

8 ALL SALADS

NUMBER OF PEOPLE SERVED	15	20	25	30	35	40	45	50
GARDEN SALAD	\$20	\$30	\$40	\$50	\$60	\$70	\$80	\$90
YOUR CHOICE OF SALAD	\$25	\$35	\$45	\$55	\$65	\$75	\$85	\$95

9 ALL BREADS

NUMBER OF PEOPLE SERVED	10	20	25	30	35	40	45	50
TANDOOR ROTI	\$20	\$30	\$35	\$45	\$50	\$55	\$60	\$65
PLAIN NAAN	\$25	\$35	\$40	\$50	\$55	\$60	\$65	\$70
BUTTER NAAN	\$30	\$40	\$50	\$60	\$70	\$80	\$90	\$100
GARLIC NAAN	\$30	\$40	\$50	\$60	\$70	\$80	\$90	\$100
ONION NAAN	\$30	\$40	\$50	\$60	\$70	\$80	\$90	\$100

10 ALL DESSERTS

NUMBER OF PEOPLE SERVED	10	15	20	25	30	35	40	45
DOUBLE KA MEETHA	\$30	\$40	\$50	\$60	\$70	\$80	\$90	\$100
GULAB JAMUN	\$35	\$50	\$65	\$80	\$95	\$105	\$120	\$135
RASMALAI	\$40	\$55	\$70	\$85	\$100	\$115	\$130	\$145

Double Ka meeta



Rasmalai



Mango Lassi





64 Stonehaven Dr, Kanata, ON K2M 2Y2
 613 271 3073 arleyskanata@gmail.com
 www.arleyskanata.ca

GUEST NAME _____

ORDER DATE _____ BOOKED BY _____

PICK UP TIMINGS _____ DATE _____ DELIVERY CHARGES IF REQUIRED _____

NUMBER OF TOTAL GUESTS _____ ADULTS _____ CHILDREN (6-12YRS) _____

PHONE NUMBER _____ EMAIL _____

ADDRESS _____ CITY _____ POSTAL CODE _____

PAYMENT METHOD _____ ADVANCE PAYMENT \$ _____ 50% AT TIME OF ORDER

BALANCE PAYMENT AT TIME OF PICKUP \$ _____

1 VEG MAIN	6 RICE & BIRYANI
2 NON-VEG MAIN	7 SALADS
3 VEG APP	8 BREADS
4 NON-VEG APP	9 DESSERTS
5 RAITA	10 OTHERS

SPECIAL NOTES _____

I agree to pay the Total Amount plus any applicable charges finalized for the above Catering Service by Arleys N Nawabs Bar & Grill Management

GUEST SIGNATURE _____ MANAGEMENT _____

ADVANCE PAYMENT	
BALANCE PAYMENT	
TAXES	
EXTRA CHARGES (IF APPLICABLE)	
GRAND TOTAL	

*Please expect delays in certain cases due to any unavoidable circumstances, which are not under the control of management. We apologize for any inconvenience.

CATERING PRICING

MIN. ORDER 30 GUESTS

SILVER - \$19/PP (FOR CLASSIC MENU OPTIONS)

10
ITEMS

2 APPS: 1 MEAT / 1 VEGETARIAN APPS OR 2 VEGETARIAN APPS
3 MAINS: 1 MEAT / 2 VEGETARIAN MAINS OR 3 VEGETARIAN MAINS
SIDES: NAAN • RAITA • RICE • SALAD • 1 DESSERT

GOLD - \$22/PP (FOR CLASSIC MENU OPTIONS)

12
ITEMS

3 APPS: 1 MEAT / 2 VEGETARIAN APPS OR 4 VEGETARIAN APPS
4 MAINS: 2 MEAT / 2 VEGETARIAN MAINS OR 4 VEGETARIAN MAINS
SIDES: NAAN • RAITA • RICE • SALAD • 1 DESSERT

DIAMOND - \$24/PP (FOR CLASSIC MENU OPTIONS)

13
ITEMS

4 APPS: 2 MEAT / 2 VEGETARIAN APPS OR 4 VEGETARIAN APPS
4 MAINS: 2 MEAT / 2 VEGETARIAN MAINS OR 4 VEGETARIAN MAINS
SIDES: NAAN • RAITA • RICE • SALAD • 1 DESSERT

PLATINUM - \$26/PP (FOR CLASSIC MENU OPTIONS)

14
ITEMS

4 APPS: 2 MEAT / 2 VEGETARIAN APPS OR 4 VEGETARIAN APPS
5 MAINS: 2 MEAT / 3 VEGETARIAN MAINS OR 5 VEGETARIAN MAINS
SIDES: NAAN • RAITA • RICE • SALAD • 1 DESSERT

Delivery charges extra, if applicable. Taxes and service charges extra. Advance payment of 50% on order, 50% at time of pickup. Delays might happen due to unavoidable circumstances. Conditions may apply. 1 Veg Main Dish has to be 24k Signature Dal Makhani. *Signature Dishes at \$3 per person, per dish, are extra.

Arley's 'N' Nawab's

BAR & GRILL

Catering made easy:

Our catering coordinators are a call away to assist you in creating and customizing your menu. We know our food the best, and we've done this plenty of times before. Just let us know what you're looking for, and we'll help bring the best food your guests have had in awhile, back again.

